



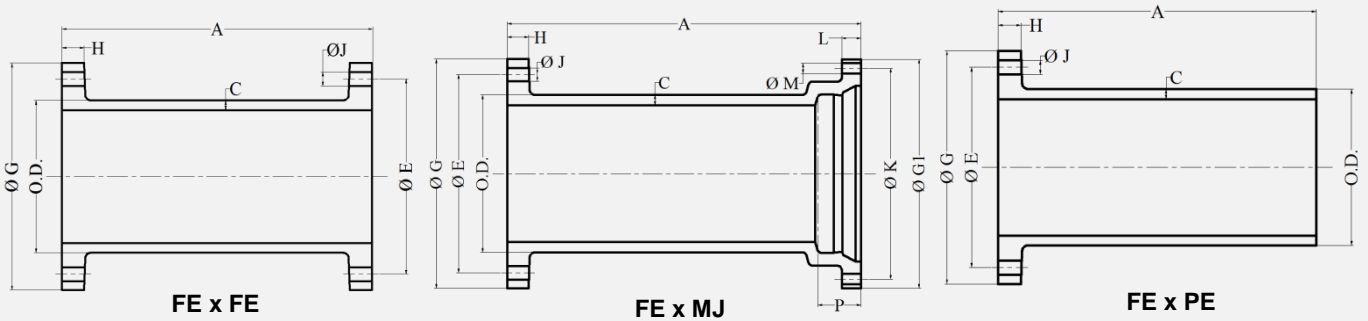
For Generations

McWANE

SIZES – 3" to 54"

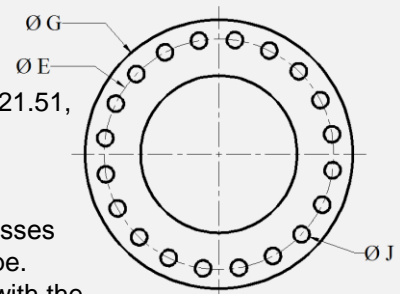
FABRICATED FLANGE & WALL PIPES

FABRICATED FLANGE PIPES



SIZE	A	B	C	O.D.			Ø E	Ø G	Ø G1	H		NO. OF FLANGED BOLT HOLES	Ø J	Ø K		L		NO OF MJ BOLT HOLES	M		P
				MIN	MAX	MIN				MAX	MIN			MAX	MIN	MAX	MIN		MAX		
3	AS REQUIRE D	AS REQUIRE D	0.31	3.90	4.02	6.00	7.50	7.69	0.63	0.87	4	0.750	6.13	6.25	0.88	0.94	4	0.750	0.810	2.50	
4			0.32	4.74	4.86	7.50	9.00	9.12	0.82	1.06	8	0.750	7.44	7.56	0.94	1.00	4	0.875	0.935	2.50	
6			0.34	6.84	6.96	9.50	11.00	11.12	0.88	1.12	8	0.875	9.44	9.56	1.00	1.06	6	0.875	0.935	2.50	
8			0.36	8.99	9.11	11.75	13.50	13.37	1.00	1.24	8	0.875	11.69	11.81	1.04	1.12	6	0.875	0.935	2.50	
10			0.38	11.04	11.16	14.25	16.00	15.69	1.07	1.31	12	1.000	13.94	14.06	1.11	1.19	8	0.875	0.935	2.50	
12			0.40	13.14	13.26	17.00	19.00	17.94	1.13	1.37	12	1.000	16.19	16.31	1.17	1.25	8	0.875	0.935	2.50	
14			0.42	15.22	15.35	18.75	21.00	20.31	1.19	1.57	12	1.125	18.69	18.81	1.19	1.31	10	0.875	0.935	3.50	
16			0.43	17.32	17.45	21.25	23.50	22.56	1.25	1.63	16	1.125	20.94	21.06	1.26	1.38	12	0.875	0.935	3.50	
18			0.44	19.42	19.55	22.75	25.00	24.83	1.37	1.75	16	1.250	23.19	23.31	1.32	1.44	12	0.875	0.935	3.50	
20			0.45	21.52	21.65	25.00	27.50	27.08	1.50	1.88	20	1.250	25.44	25.56	1.38	1.50	14	0.875	0.935	3.50	
24			0.47	25.72	25.85	29.50	32.00	31.58	1.69	2.07	20	1.375	29.94	30.06	1.50	1.62	16	0.875	0.935	3.50	
30			0.51	31.94	32.08	36.00	38.75	39.12	1.87	2.37	28	1.375	36.82	36.94	1.69	1.81	20	1.125	1.185	4.00	
36			0.58	38.24	38.38	42.75	46.00	46.00	2.13	2.63	32	1.625	43.69	43.81	1.88	2.00	24	1.125	1.185	4.00	
42			0.65	44.44	44.58	49.50	53.00	53.12	2.37	2.87	36	1.625	50.56	50.68	1.88	2.00	28	1.375	1.435	4.00	
48			0.72	50.74	50.88	56.00	59.50	60.00	2.50	3.00	44	1.625	57.44	57.56	1.88	2.00	32	1.375	1.435	4.00	
54			0.81	57.40	57.64	62.75	62.75	N/A	2.75	3.25	44	1.875	N/A	N/A	N/A	N/A	N/A	N/A	N/A	N/A	

- Tolerance on length of F.E x F.E and F.E x M.J pipe shall be $\pm 0.125"$.
- Tolerance on length of F.E x P.E shall be $\pm 0.25"$.
- Above material shall meet all applicable sections of ANSI A21.10, A21.15, A21.51, B2.1, B16.1/AWWA, C110, C115, C150, C151, and all revisions thereto.
- Flanged pipe shall be ductile iron pipe with ductile iron flanges threaded on.
- Linings, if required, shall be in accordance with ANSI A21.4.
- The mechanical joint bell for 30" & 36" sizes of ductile iron pipe have thicknesses different from those shown in ANSI A21.11, which are based on grey iron pipe. These reduced thickness provided a lighter-weight bell which is compatible with the wall thickness of ductile iron pipe.
- Submitted material only. Consult engineer for application.
- 250 lb. faced and drilled flanges available upon request.



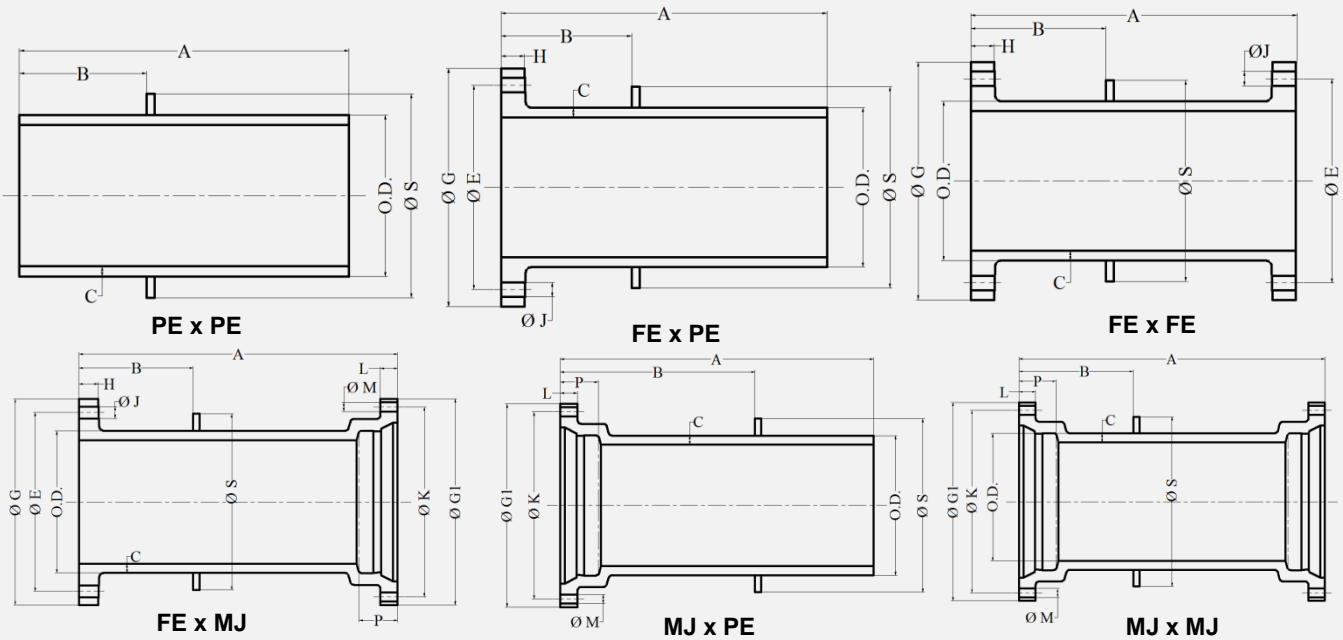
FLANGE DETAIL

❖ visit pe.mcwane.com for more information

❖ All Dimensions are in Inches

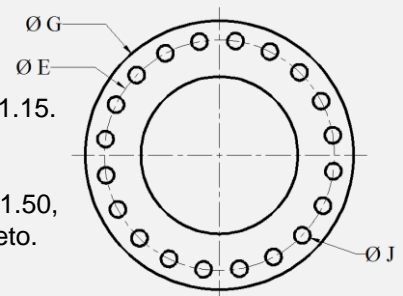
FABRICATED FLANGE & WALL PIPES

FABRICATED FLANGE PIPES



SIZE	A	B	C	O.D		Ø E	Ø G	Ø G1	H		NO. OF FLANGED BOLT HOLES	Ø J	Ø K		L		NO OF MJ BOLT HOLES	M		P	S
				MIN	MAX				MIN	MAX			MIN	MAX	MIN	MAX					
3	AS RE QUI RED	AS RE QUI RED	0.31	3.90	4.02	6.00	7.50	7.69	0.63	0.87	4	0.750	6.13	6.25	0.88	0.94	4	0.750	0.810	2.50	6.50
4			0.32	4.74	4.86	7.50	9.00	9.12	0.82	1.06	8	0.750	7.44	7.56	0.94	1.00	4	0.875	0.935	2.50	7.40
6			0.34	6.84	6.96	9.50	11.00	11.12	0.88	1.12	8	0.875	9.44	9.56	1.00	1.06	6	0.875	0.935	2.50	9.50
8			0.36	8.99	9.11	11.75	13.50	13.37	1.00	1.24	8	0.875	11.69	11.81	1.04	1.12	6	0.875	0.935	2.50	12.00
10			0.38	11.04	11.16	14.25	16.00	15.69	1.07	1.31	12	1.000	13.94	14.06	1.11	1.19	8	0.875	0.935	2.50	14.10
12			0.40	13.14	13.26	17.00	19.00	17.94	1.13	1.37	12	1.000	16.19	16.31	1.17	1.25	8	0.875	0.935	2.50	16.25
14			0.42	15.22	15.35	18.75	21.00	20.31	1.19	1.57	12	1.125	18.69	18.81	1.19	1.31	10	0.875	0.935	3.50	18.40
16			0.43	17.32	17.45	21.25	23.50	22.56	1.25	1.63	16	1.125	20.94	21.06	1.26	1.38	12	0.875	0.935	3.50	21.00
18			0.44	19.42	19.55	22.75	25.00	24.83	1.37	1.75	16	1.250	23.19	23.31	1.32	1.44	12	0.875	0.935	3.50	23.10
20			0.45	21.52	21.65	25.00	27.50	27.08	1.50	1.88	20	1.250	25.44	25.56	1.38	1.50	14	0.875	0.935	3.50	25.70
24			0.47	25.72	25.85	29.50	32.00	31.58	1.69	2.07	20	1.375	29.94	30.06	1.50	1.62	16	0.875	0.935	3.50	30.00
30			0.51	31.94	32.08	36.00	38.75	39.12	1.87	2.37	28	1.375	36.82	36.94	1.69	1.81	20	1.125	1.185	4.00	37.00
36			0.58	38.24	38.38	42.75	46.00	46.00	2.13	2.63	32	1.625	43.69	43.81	1.88	2.00	24	1.125	1.185	4.00	43.40
42			0.65	44.44	44.58	49.50	53.00	53.12	2.37	2.87	36	1.625	50.56	50.68	1.88	2.00	28	1.375	1.435	4.00	49.50
48			0.72	50.74	50.88	56.00	59.50	60.00	2.50	3.00	44	1.625	57.44	57.56	1.88	2.00	32	1.375	1.435	4.00	55.90
54			0.81	57.40	57.64	62.75	62.75	N/A	2.75	3.25	44	1.875	N/A	N/A	N/A	N/A	N/A	N/A	N/A	N/A	N/A

- Tolerance on location of waterstop shall be $\pm 0.125"$.
- All waterstops shall be welded on in a watertight fashion.
- All flanges shall be ductile iron and threaded on ductile iron pipe per ANSI A21.15.
- M.J x M.J. shall have a ductile iron M.J. bell threaded on ductile iron pipe.
- Linings, if required, shall be in accordance with ANSI A21.4.
- Above material shall meet all applicable sections of ANSI A21.10, A21.15, A21.50, A21.51, B2.1, B16.1/AWWA, C110, C115, C150, C151, and all revisions thereto.
- Submitted material only. Consult engineer for application.
- 250 lb. faced and drilled flanges available upon request.



FLANGE DETAIL

❖ visit pe.mcwane.com for more information

❖ All Dimensions are in Inches

FABRICATED FLANGE & WALL PIPES